

# PRODUCT INFORMATION PACKET

Model No: 056B17D15548

Catalog No: C185A

1.50 HP General Purpose Motor, 1 phase, 1800 RPM, 115/230 V, 56 Frame, ODP  
Single Phase ODP Motors



Regal and Marathon are trademarks of Regal Beloit Corporation or one of its affiliated companies.  
©2020 Regal Beloit Corporation, All Rights Reserved. MC017097E

REGAL



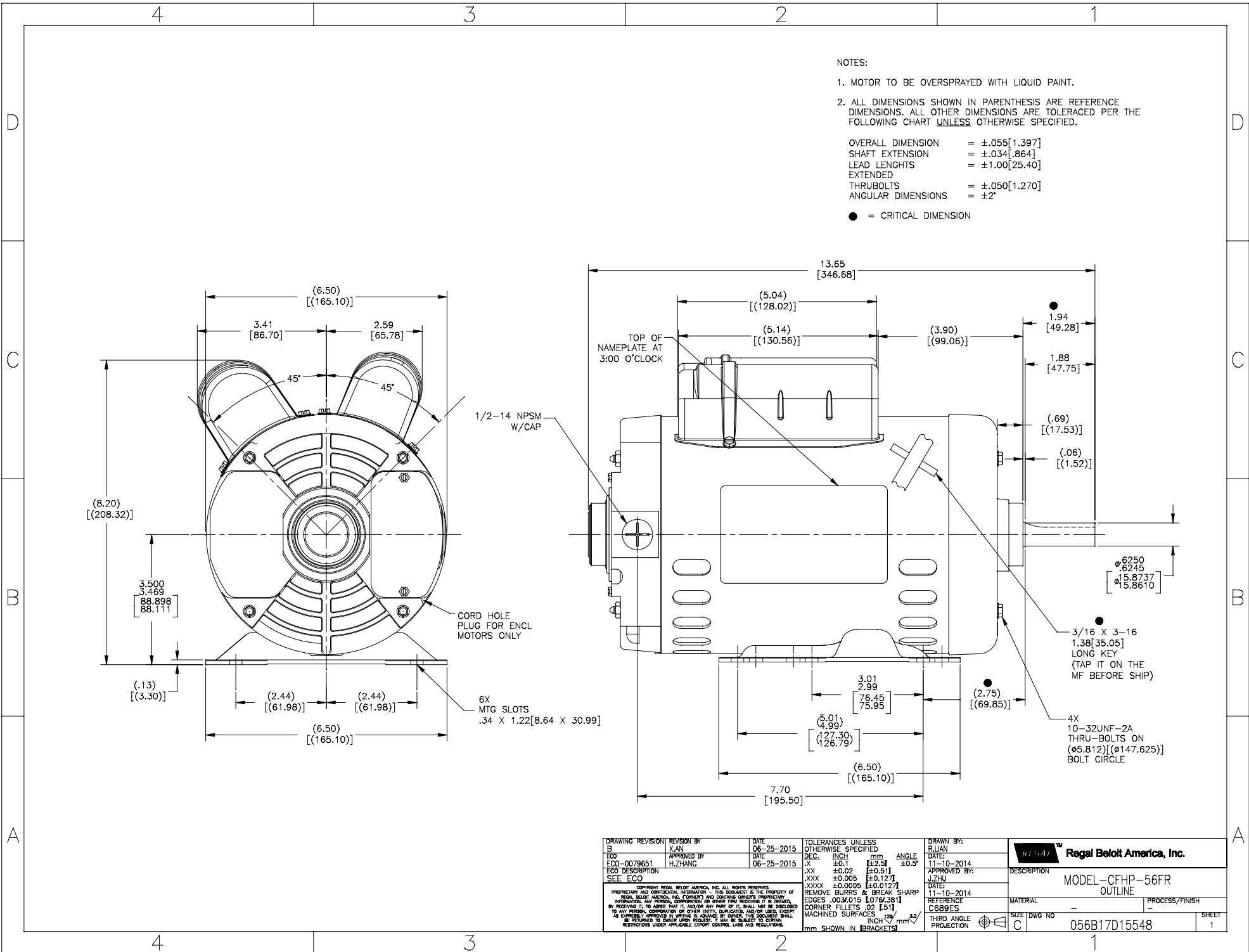
### Nameplate Specifications

Output HP	1.50 Hp	Output KW	1.1 kW
Frequency	60 Hz	Voltage	115/230 V
Current	12.6/6.3 A	Speed	1725 rpm
Service Factor	1.15	Phase	1
Efficiency	83.8 %	Power Factor	93.4
Duty	Continuous	Insulation Class	B
Design Code	N	KVA Code	J
Frame	56	Enclosure	Drip Proof
Thermal Protection	No	Ambient Temperature	40 °C
Drive End Bearing Size	6203	Opp Drive End Bearing Size	6203
UL	Recognized	CSA	Y
CE	Y	IP Code	22

### Technical Specifications

Electrical Type	Capacitor Start Capacitor Run	Starting Method	Across The Line
Poles	4	Rotation	Selective Counterclockwise
Resistance Main	1.4 Ohms	Mounting	Rigid Base
Motor Orientation	Horizontal	Drive End Bearing	Ball
Opp Drive End Bearing	Ball	Frame Material	Rolled Steel
Shaft Type	NEMA 56	Overall Length	13.62 in
Frame Length	8.25 in	Shaft Diameter	0.625 in
Shaft Extension	1.88 in	Assembly/Box Mounting	F1 OUT ODE BRKT RADIAL
Connection Drawing	D0000435-001	Outline Drawing	056B17D15548-S01

This is an uncontrolled document once printed or downloaded and is subject to change without notice. Date Created:14/12/2020



- NOTES:
1. MOTOR TO BE OVERSPRAYED WITH LIQUID PAINT.
  2. ALL DIMENSIONS SHOWN IN PARENTHESIS ARE REFERENCE DIMENSIONS. ALL OTHER DIMENSIONS ARE TOLERANCED PER THE FOLLOWING CHART UNLESS OTHERWISE SPECIFIED.
- OVERALL DIMENSION = ±.05[1.397]  
 SHAFT EXTENSION = ±.034[.864]  
 LEAD LENGTHS = ±1.00[25.40]  
 EXTENDED THRU-BOLTS = ±.050[1.270]  
 ANGULAR DIMENSIONS = ±2°
- = CRITICAL DIMENSION

DRAWING REVISION BY B X.AN	DATE 06-25-2015	TOLERANCES UNLESS OTHERWISE SPECIFIED DEC. INCH mm ANGLE X ±.01 [±.25] ±0.5° XX ±0.02 [±0.51] XXX ±0.005 [±0.127] XXXX ±0.0005 [±0.0127]	DRAWN BY: R.LIAN	Regal Beloit America, Inc.
ECO-0079651 APPROVED BY H.ZHANG	DATE 06-25-2015	REMOVE BURRS & BREAK SHARP EDGES .003/015 [0.076/3.81] CORNER FILLETS .02 [.51] MACHINED SURFACES	DATE: 11-10-2014	DESCRIPTION MODEL-CFHP-56FR OUTLINE
SEE ECO		INCH mm	APPROVED BY: J.ZHU	MATERIAL
<small>COPYRIGHT REGAL BELOIT AMERICA, INC. ALL RIGHTS RESERVED.                  PROPRIETARY AND CONFIDENTIAL INFORMATION - THIS DOCUMENT IS THE PROPERTY OF                  REGAL BELOIT AMERICA, INC. (CONFER) AND CONTAINS OWNERS PROPRIETARY                  INFORMATION. ANY REPRODUCTION, COPIATION OR OTHER USE WITHOUT PERMISSION IS                  PROHIBITED. BY RECEIVING IT, YOU AGREE THAT IT, AND/OR ANY PART OF IT, SHALL NOT BE DISCLOSED                  TO ANY PERSON, CORPORATION OR OTHER ENTITY, SUPPLIER, AND/OR USER, WITHOUT                  THE EXPRESS WRITTEN PERMISSION OF REGAL BELOIT AMERICA, INC. THIS DOCUMENT SHALL                  BE RETURNED TO OWNER UPON REQUEST. IT MAY BE SUBJECT TO CERTAIN                  RESTRICTIONS UNDER APPLICABLE EXPORT CONTROL LAWS AND REGULATIONS.</small>			DATE: 11-10-2014	PROCESS/FINISH
			REFERENCE C689ES	SIZE DWG NO 056B17D15548
			THIRD ANGLE PROJECTION	SHEET 1



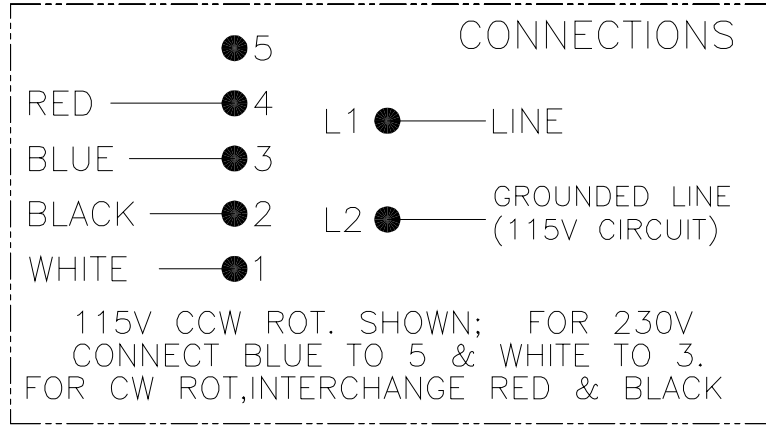
4

3

2

1

REVISION:	ECO	REVISADO POR:	FECHA:	APROBADO POR:	FECHA:
A	ECO-0028953	A.BAUGHMAN	11-09-2012	A.BAUGHMAN	11-09-2012



CARACTERISTICAS DE GEOMETRIA Y SIMBOLOS ▽ PLANICIDAD — RECTITUD ∠ ANGULARIDAD ⊥ PERPENDICULARIDAD (A ESQUADRA) // PARALELISMO ○ REDONDEZ (CIRCULARIDAD) ⌀ CILINDRICIDAD ⌒ PERFIL DE CUALQUIER SUPERFICIE ⌒ PERFIL DE CUALQUIER LINEA ≠ VARIACION ⊕ POSICION REAL ⊙ CONCENTRICIDAD ≡ SIMETRIA	A MENOS QUE SE ESPECIFIQUE DE OTRA MANERA, LAS TOLERANCIAS DE LAS DIMS. SON LAS SIGUIENTES: PULG    X    XX    XXX    XXXX mm    ±.1   ±.02   ±.005   ±.0005 mm    ±0.5   ±0.13   ±0.013 ANG. ±50 GRADOS ELIMINAR REBABAS Y ORILLAS FILOSAS DEL BORDE. PULG .003-.015 mm 0.1-0.4 FILETEAR ESQUINA: PULG .020 mm 0.5 MAQUINAR SUPERFICIES PULG 125 mm 3.2 DIMS METRICAS MOSTRADAS [PARENTESIS]	DIBUJADO POR: A.BAUGHMAN      11-09-2012	<b>REGAL-BELOIT CORPORATION</b>
		APROBADO POR: A.BAUGHMAN      11-09-2012	
		TERCER ANGULO DE PROYECCION	FECHA EDS: 11-11-2011 REV. FORMATO: H
		CONFIDENCIAL: ESTE DIBUJO Y SU INFORMACION SON PROPIEDAD DE USO EXCLUSIVO Y CONFIDENCIAL DE REGAL-BELOIT CORPORATION. Y NO DEBERAN SER REVELADOS, DUPLICADOS, DISTRIBUIDOS O USARSE DE OTRA MANERA SIN EL CONSENTIMIENTO ESCRITO DE REGAL-BELOIT CORPORATION. -TODOS LOS DERECHOS RESERVADOS.	
		TAMAÑO: C	NUMERO DE DIBUJO: D0000435-001
		ESCALA: NONE	HOJA: 1

4

3

2

1

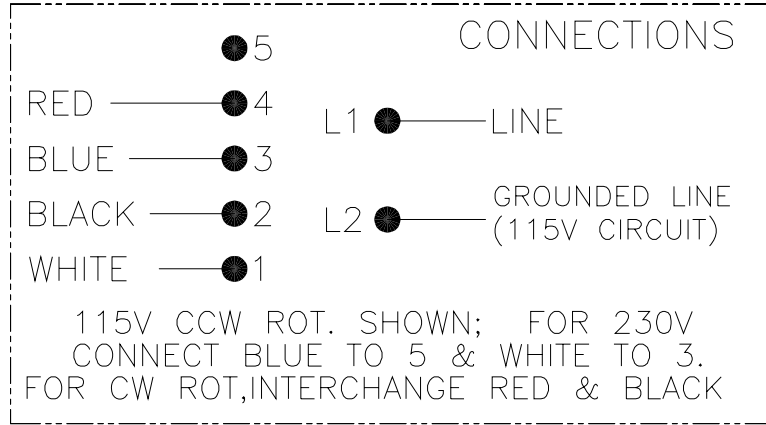
4

3

2

1

版本	ECO	编制	日期	批准	日期
A	ECO-0028953	A.BAUGHMAN	11-09-2012	A.BAUGHMAN	11-09-2012



形位公差 □ 平面度 ⊥ 垂直度 ∠ 倾斜度 ⊥ 垂直度 // 平行度 ⊙ 圆度 Ⓞ 圆柱度 Ⓜ 面轮廓度 Ⓢ 线轮廓度 Ⓡ 圆跳动 Ⓢ 位置度 ⊕ 对称度	除另有注明 尺寸公差如下: 英寸 X XX XXX XXXX 毫米 ±.1 ±.02 ±.005 ±.0005 角度 ±.50 度 清理毛刺和尖棱 英寸 .003-.015 毫米 0.1-0.4 内圆角 英寸 .020 毫米 0.5 表面粗糙度 英制 125 公制 3.2 米制尺寸显示在L
--	--

ASME Y14.5M 1994

绘图:	A.BAUGHMAN	11-09-2012
批准:	A.BAUGHMAN	11-09-2012
第三角投影		图版格式发布日期 11-11-2011 图版格式版本 H
机密: 本图纸及相关信息所有权归REGAL-BELOIT CORPORATION. 未经REGAL-BELOIT CORPORATION书面授权, 不得泄露、 复制、传播或作其他用途。--版权所有		

<b>REGAL-BELOIT CORPORATION</b>	
名称	CONN DIAGRAM-NAMEPLATE
图号	D0000435-001
比例	NONE
页号	1

4

3

2

1



**P.O. BOX 8003  
WAUSAU, WI 54401-8003  
PH. 715-675-3311**

**CERTIFICATION DATA SHEET**

**CUSTOMER:** CUSTOMER PO#:  
**ORDER #:** MODEL #: 56B17D15548 A  
**CONN. DIAGRAM:** D0000435-001 CUSTOMER PART #:  
**OUTLINE:** 056B17D15548 MOUNTING: F1 OUT ODE BRKT RADIAL  
**WINDING #:** SS0053211 3

**TYPICAL MOTOR PERFORMANCE DATA**

HP	KW	SYNC. RPM	F.L. RPM	FRAME	ENCLOSURE	KVA CODE	DESIGN	
1 1/2	1.12	1800	1725	56	DP	J	N	
PH	Hz	VOLTS	AMPS	START TYPE	DUTY	INSL	S.F.	AMB° C
1	60	115/230	12.6/6.3	ACROSS THE LINE	CONTINUOUS	B3	1.15	40

<b>FULL LOAD EFF:</b>	83.8	<b>3/4 LOAD EFF:</b>	81	<b>1/2 LOAD EFF:</b>	76	<b>GTD. EFF</b>		<b>ELEC. TYPE</b>
<b>FULL LOAD PF:</b>	93.4	<b>3/4 LOAD PF:</b>	93.4	<b>1/2 LOAD PF:</b>	91.1	81.5		CAP START CAP RUN
F.L. TORQUE	LOCKED ROTOR AMPS	L.R. TORQUE	B.D. TORQUE	F.L. RISE° C				
72 OZ-FT	97.4 / 48.7	210 OZ-FT	190 OZ-FT	41				

SOUND PRESSURE @ 3 FT.	SOUND POWER	ROTOR WK^2	MAX. WK^2	SAFE STALL TIME	STARTS / HOUR	APPROX. MOTOR WGT
68 DBA	78 DBA	0 LB-FT^2	1.5 LB-FT^2	10 SEC.	2	45 LBS.

**\*\*\* SUPPLEMENTAL INFORMATION \*\*\***

DE BRACKET TYPE	ODE BRACKET TYPE	MOUNT TYPE	ORIENTATION	SEVERE DUTY	HAZARDOUS LOCATION	DRIIP COVER	SCREENS	PAINT
STANDARD	STANDARD	RIGID	HORIZONTAL	FALSE	NONE	FALSE	NONE	BLACK (POWDER)
BEARINGS DE ODE	GREASE	SHAFT TYPE	SPECIAL DE	SPECIAL ODE	SHAFT MATERIAL	FRAME MATERIAL		
BALL BALL 6203 6203	POLYREX EM	STANDARD 56	NONE	NONE	1144 STRESSPROOF (C-223)	ROLLED STEEL		

THERMO-PROTECTORS				THERMISTORS		
THERMOSTATS	PROTECTORS	WDG RTDS	BRG RTDS	NONE	FALSE	NONE
NONE	NOT	NONE	NONE	NONE	FALSE	NONE

<b>INVERTER TORQUE:</b>	NONE
<b>INV. HP SPEED RANGE:</b>	NONE
<b>ENCODER:</b>	NONE
NONE	NONE
NONE	PPR
<b>BRAKE:</b>	NONE
NONE	P/N NONE
NONE	NONE
NONE	FT-LB NONE V NONE HZ

\*  
N  
O  
T  
E  
S  
\*